

Business Central Procore Connector Setup Guide

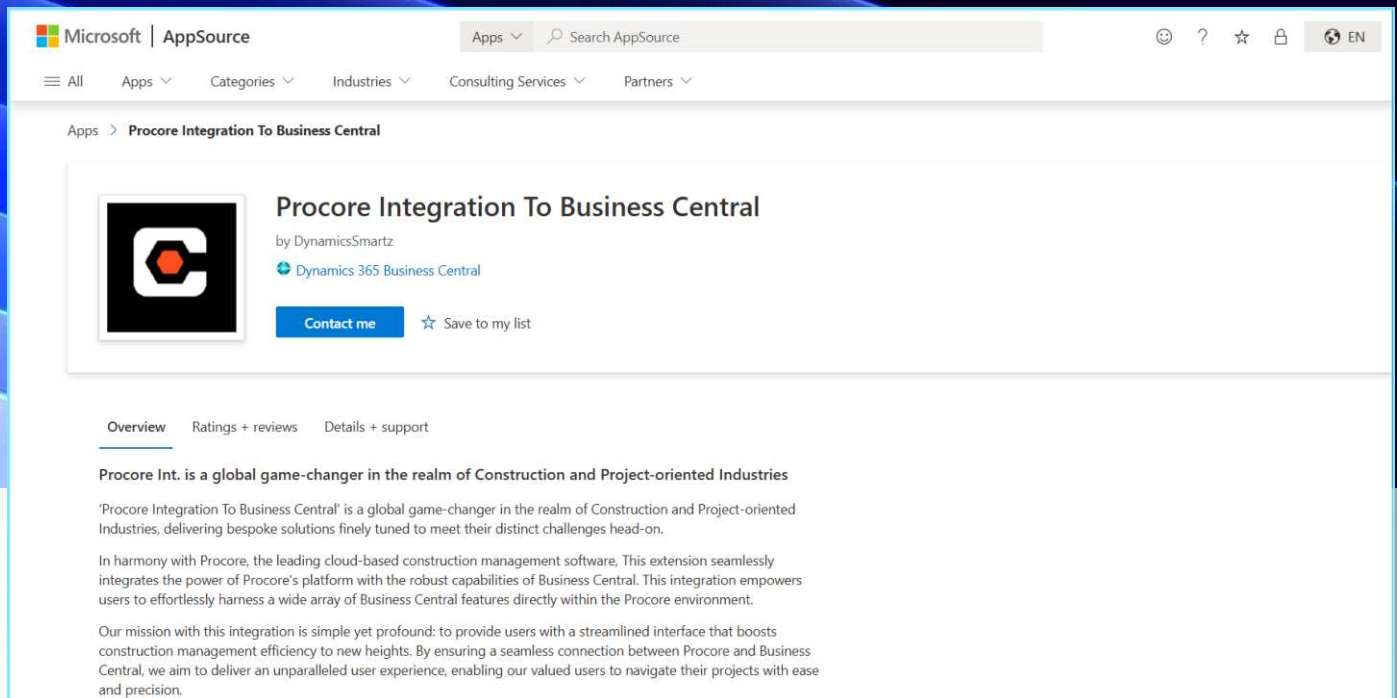
This guide provides step-by-step instructions for installing and configuring the Procore Connector Application in both Microsoft Dynamics 365 Business Central and Procore.



1

Installing the Procore Connector in Business Central

The Procore Connector is available on Microsoft AppSource and can be installed directly within Business Central.




The screenshot displays the Microsoft AppSource interface. At the top, the Microsoft logo and 'AppSource' text are visible, along with a search bar and navigation links. Below the navigation bar, the breadcrumb 'Apps > Procore Integration To Business Central' is shown. The main content area features the app's icon, title 'Procore Integration To Business Central', and developer information 'by DynamicsSmaritz' and 'Dynamics 365 Business Central'. A 'Contact me' button and a 'Save to my list' option are also present. Below this, there are tabs for 'Overview', 'Ratings + reviews', and 'Details + support'. The 'Overview' tab is selected, showing a description of the app as a 'global game-changer in the realm of Construction and Project-oriented Industries'. The description highlights the app's integration with Procore and Business Central, emphasizing its role in streamlining construction management efficiency and providing a seamless user experience.

Microsoft | AppSource

Apps Search AppSource

All Apps Categories Industries Consulting Services Partners

Apps > Procore Integration To Business Central

 **Procore Integration To Business Central**
by DynamicsSmaritz
Dynamics 365 Business Central
[Contact me](#) ☆ Save to my list

[Overview](#) [Ratings + reviews](#) [Details + support](#)

Procore Int. is a global game-changer in the realm of Construction and Project-oriented Industries

'Procore Integration To Business Central' is a global game-changer in the realm of Construction and Project-oriented Industries, delivering bespoke solutions finely tuned to meet their distinct challenges head-on.

In harmony with Procore, the leading cloud-based construction management software, This extension seamlessly integrates the power of Procore's platform with the robust capabilities of Business Central. This integration empowers users to effortlessly harness a wide array of Business Central features directly within the Procore environment.

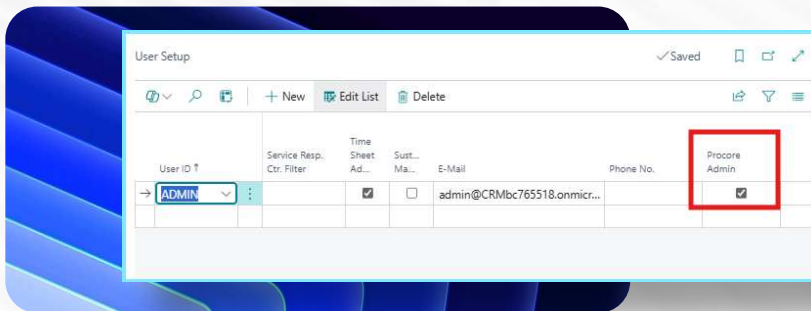
Our mission with this integration is simple yet profound: to provide users with a streamlined interface that boosts construction management efficiency to new heights. By ensuring a seamless connection between Procore and Business Central, we aim to deliver an unparalleled user experience, enabling our valued users to navigate their projects with ease and precision.

2

Configuring the Connector in Business Central

Enabling User Access

To access the Procore setup, go to the **User Setup** page in Business Central and enable the **Procore Admin** option (Boolean field). This grants access to the **Procore BC Integration Setup** page, where all required integration fields are located.



Procore Integration Setup in Business Central

In the **General** section of the **Procore-BC Integration Setup** page, fill in the following essential fields:

Procore App
Client ID

Client Secret

Company ID

Authorization
URL

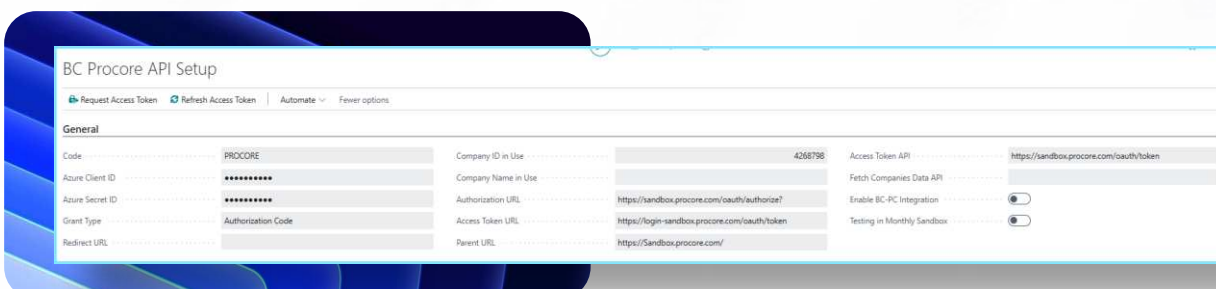
Parent URL

Access
Token URL

Access
Token API

These configurations are required to initialize and authenticate the integration between Business Central and Procore.

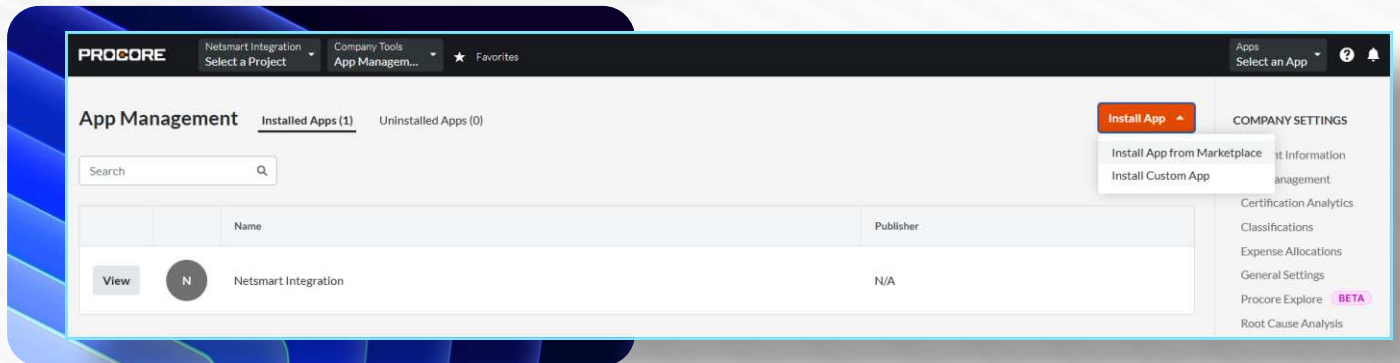
Note: This setup should be performed by the DynamicsSmartz team.



3 Installing the App in Procore

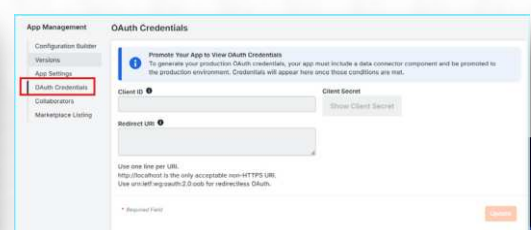
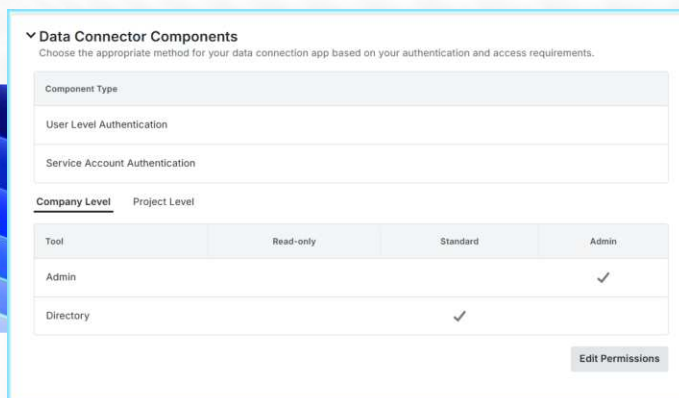
The connector app can be installed in Procore through one of two methods:

- **Procore Marketplace:** Search and install directly.
- **Custom App Installation:** Use the appropriate App Version Key (different for Sandbox and Production environments).



4 Setting Permissions in Procore

Ensure the app has the required permissions to function correctly. This is done via the Manage App section in Procore.



Within this section, you can:

- Edit the app's permission template.
- Access the **Sandbox** and **Production App Version Keys** needed for installation.
- Retrieve the **Client ID** and **Client Secret** from the **OAuth Credentials** tab on the left panel.

About DynamicsSmartz

DynamicsSmartz, a trusted full-service Microsoft Business Solutions provider since 1999, has been helping businesses scale through a comprehensive suite of Microsoft applications, including **Business Central, Finance & Supply Chain Management, CRM, Field Service, and the Power Platform.** As a division of Rochester-based **Netsmartz LLC**, **DynamicsSmartz** specializes in providing end-to-end services, including implementation, integration, and ongoing support.

Our team of over **150 experts and consultants brings deep industry expertise**, working closely with organizations to identify growth opportunities and help them achieve their full potential.

Our flagship solutions, [Construction365](#) and [ProjectPro](#), **streamline and automate the entire project management process for end-users** and Microsoft partners respectively. These solutions enable seamless management of critical functions like job quoting, project accounting, resource management, material planning, customer relations, and much more—all within a unified database.

500+

Successful
Projects

150+

Team
Members

25+

Years in
Business

10+

Locations



NORTH AMERICA

Rochester, Miami, Austin
Toronto, Waterloo, Vancouver

EUROPE

London

ASIA

Dubai
Gurugram, Noida, Chandigarh
Singapore, Mohali

AUSTRALIA

Melbourne
Sydney

Head Office

1250 Pittsford-Victor Road Ste 310, Pittsford, NY 14534



www.dynamicssmartz.com

info@dynamicssmartz.com

1-647-696-4534

Get in Touch